



GLEBE PRIMARY  
NURSERY  
SCHOOL



## Contact:



Glebe Primary School,  
Church Lane,  
Southwick, BN42 4GB



[www.glebeprimary.co.uk](http://www.glebeprimary.co.uk)



[office@glebeprimary.co.uk](mailto:office@glebeprimary.co.uk)



01273 592163



Glebe Primary  
Nursery School

OPENING  
JANUARY  
2024

We are proud to open an inclusive nursery where every child will be nurtured to reach their full potential.

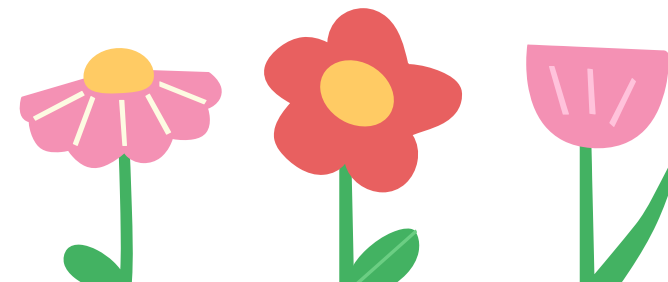
What children experience in nursery can create strong and lasting foundations!



## About us

At Glebe we have an excellent purpose built EYFS department which includes both a large indoor and outdoor learning area.

Our outdoor and indoor areas provide learning and social opportunities for children in a happy, safe and secure environment.





## Our facilities

Our nursery is attached to the main school. It is a calm and welcoming, helping to make the transition from home to school as smooth as possible. The inside and outdoor learning environment is carefully planned and resourced offering a rich and exciting learning environment in which your child can explore, discover and learn through play.

## The curriculum

The Early Years Foundation Stage is a framework that supports your child's learning and development from birth to five years. The framework is based on three important characteristics of learning:

- \*Playing and exploring
- \*Active learning
- \*Creating and thinking critically

The learning and development in EYFS is split into three prime areas and four specifics.

Prime areas:

\*Communication and Language/Physical, Development/Personal, Social and Emotional Development

Specific areas:

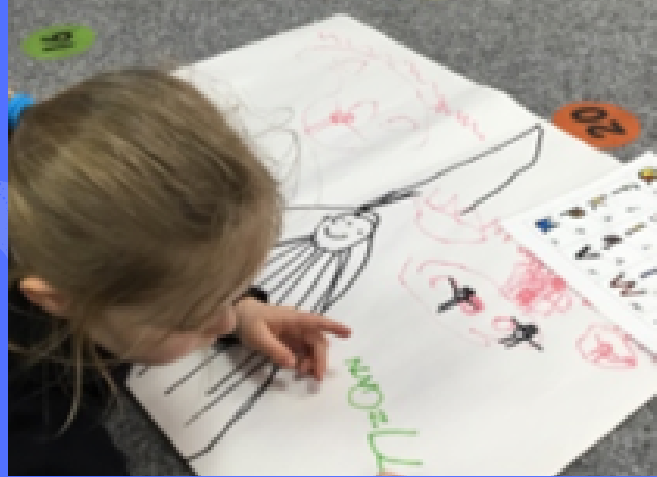
\*Literacy, Mathematics, Understanding the World, Expressive Arts and Design



## Daily routine

A typical session in the nursery will include:

- \*Carpet times
- \*Phonics/Maths inputs
- \*Key groups times
- \*Child initiated/focus activities
- \*Story/song times
- \*'Glee-Bees' forest school session
- \*A dedicated session in the school forest school area.



## Meals & snacks

If your child stays for lunch they will be able to order a hot meal through the school's in house catering provider. If you prefer your child can bring a healthy packed lunch instead.

Snacks which include fruit and vegetables are offered in both the morning and afternoon session. Milk is served as beverage and water is available during the sessions. We ask each child to bring a labeled water bottle.

## Your child's progress

Parent consultations are held regularly throughout the school year. In addition, you will receive mini reports that outline your child's progress throughout the year.

We use an online portal to record your child's 'wow moments'. Parents are encouraged to sign up to enable them to view and contribute in order to build as complete and rounded a picture as possible.

## Nursery hours

Monday to Friday (term time only).

8.30–11.30 am (session 1 ends before lunch)

11.30am to 2.30pm (session 2, this session includes lunch).

An extra 30 minutes can be paid for between 2.30–3.00 pm to offer later pick up.

We encourage voucher use and additional sessions can be booked and paid for also.